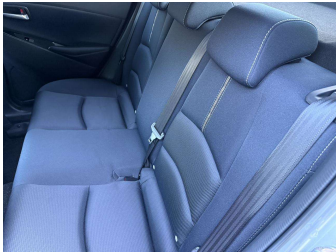


2020 Mazda 2 15S Proactive



Purchase Price

\$19,999

Includes GST
Excludes on-road costs of \$380

Finance may be available on this vehicle. Ask one of our friendly staff for more information.



Gain peace of mind with Mechanical Breakdown Insurance. **Ask us how.**



Top features

None Listed

Body Style

Hatchback

Odometer

29,609 km

Engine

1500 cc

Fuel Type

Petrol

Transmission

Auto, Front Wheel

Wheels

-

VIN

-

Interior

-

Safety



Based on 2024 UCSR rating for 14-22 models

Reg No.

-

Ext Colour

Silver

History

-

Seats

-

CO2 Emissions

★★★★★☆☆

122 grams/km

Energy Economy

★★★★☆☆☆☆

Annual fuel cost of \$2,080

5.3L per 100km

Cost per year is an estimate based on petrol price of \$2.80 per litre and an average distance of 14000 km. Emissions and Energy Economy figures standardised to 3P WLTP.

Stock ID: 12513



Great Wall Motors Wellington | Phone 04 383 9886 | Email greatwallmotorsnz@hotmail.com
2 Landfill Road, Owhiro Bay, Wellington 6023, New Zealand
www.greatwallmotors.nz