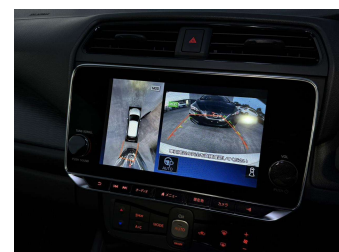
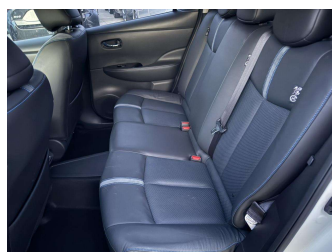
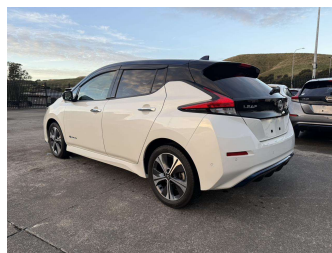



# 2021 Nissan Leaf E+ G 62kWh



**Purchase Price** **\$34,999**

Includes GST  
Excludes on-road costs of \$485

Finance may be available on this vehicle. Ask one of our friendly staff for more information.




Gain peace of mind with Mechanical Breakdown Insurance. **Ask us how.**



**Top features**

None Listed

Body Style	<b>Hatchback</b>	Reg No.	-
Odometer	<b>8,500 km</b>	Ext Colour	<b>White</b>
Engine	-	History	-
Fuel Type	<b>Electric</b>	Seats	-
Transmission	<b>Auto</b>	CO2 Emissions	★★★★★☆☆
Wheels	-	<b>0 grams/km</b>	
VIN	-	Energy Economy	★★★★★☆☆
Interior	-	<b>Annual fuel cost not available</b>	
Safety		Cost per year is an estimate based on petrol price of \$2.80 per litre and an average distance of 14000 km. Includes Road User Charges (RUC). Emissions and Energy Economy figures standardised to 3P WLTP.	
	Based on 2025 VSRR rating	<b>Stock ID: 12614</b>	



Great Wall Motors Wellington | Phone 04 383 9886 | Email [greatwallmotorsnz@hotmail.com](mailto:greatwallmotorsnz@hotmail.com)  
75 State Highway 59, Plimmerton, Wellington 5026, New Zealand  
[www.greatwallmotors.nz](http://www.greatwallmotors.nz)